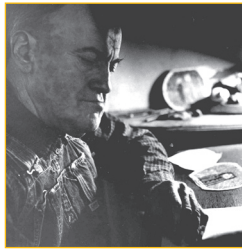


## ARTISTS ON FILM

### James Castle: Portrait of an Artist

The life and work of the self-taught, deaf artist who created detailed drawings, dreamy paintings and powerful assemblages with homemade materials. Filmmaker Jeff Wolf leads a post-screening discussion.  
TICKETS: \$6/5 AT THE DOOR



7PM JULY 30

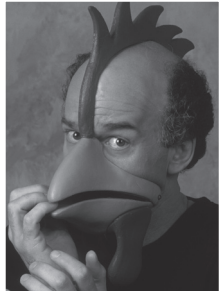
## LIVE! FOR \$5

7PM AUG 5

ISLAND FAMILY THEATER ARTS PROGRAM

### MICHAEL COOPER

An eye-popping visual artist and virtuoso mime, Cooper uses masks, stilt dancing, and storytelling, to create moving sculpture for all ages.



## ARTISTS ON FILM 7PM AUG 4, 6

### Stephen Pace: Maine Master

a moving portrait of the long-time Stonington resident, by Sedgwick filmmaker Dick Kane with music by Paul Sullivan. TICKETS FOR DOUBLE FEATURE: \$6/5 AT THE DOOR

### Who Does She Think She Is?

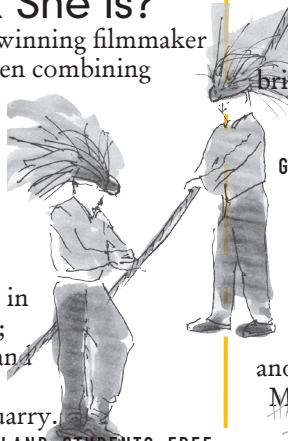
A documentary by Academy Award-winning filmmaker Pamela Tanner Boll, featuring 5 women combining creativity and mothering.

7PM AUG 7  
2 & 6 PM AUG 8

### Q2: HABITAT

a short sneak preview of a new "story in the quarry" in development by OHA; artists Alison Chase, Mia Kanazawa, and Nigel Chase; and our community at Island Heritage Trust's Settlement Quarry.

TICKETS: \$10 / 5 UNDER 17 / ISLAND STUDENTS FREE



## ONE NIGHT ONLY Mary Cleere Haran

She's been compared to Ella Fitzgerald, and sung at famed cabarets from the Algonquin to the Carlyle: now she brings her acclaimed renditions of the Great American Songbook to Stonington  
PREMIUM RESERVED SEATING \$25  
GENERAL ADMISSION \$20 / 18 / 15 / ISLAND STUDENTS FREE



7PM AUG 22

## 7PM AUG 19 LIVE! FOR \$5

ISLAND FAMILY THEATER ARTS PROGRAM

### BURT DOW, DEEP WATER MAN

another sneak preview of work-in-progress! Composer Maia Aprahamian is at work with island students and community members to create a "children's opera" version of this beloved story by local author Robert McCloskey. Full version to premiere in 2010.

HOLDING 7PM AUG 20

### GROUND: an evening of Maine poetry.

Deborah Cummins, Stuart Kestenbaum, and Maine's poet laureate Betsy Sholl in poetic dialogue with Maine masters of the past including Philip Booth, Robert Lowell, Elizabeth Bishop, Richard Eberhardt and George Oppen.

TICKETS \$10 / ISLAND STUDENTS FREE

7PM AUG 26-27

### COMMUNITY PLAYREADING

### THREE TALL

### WOMEN

reprise of Edward Albee's Pulitzer Prize winner. Sue Bolton, Cherie Mason, Veronica Young.

7PM AUG 14-15; PARTY W/  
& "Island Prom!"  
CAST SAT AUG 15

Join OHA to celebrate our  
10th Anniversary Season

July 11: 10th Annual Gala

August 7-21: operahouseARTS  
at Isalos Fine Art

August 14-15: 10th Anniversary  
REVUE & PARTY

### & NEW THIS YEAR:

Premium reserved seating for selected shows: no more waiting in line.

Print your own tickets at home with online purchase.

\$10 / 10 / 10th: Looking to the Future:

Ask how you can help to raise OHA's first endowment fund.

INCITE ART, CREATE COMMUNITY

www.operahousearts.org

207.367.2788

7PM AUG 12 LIVE! FOR \$5

### AMANDA CROCKETT

A charming clown on a trapeze, juggling and acting while airborne!



## 10th Anniversary REVUE

### LOOKING FORWARD, LOOKING BACK

We bring back some of your favorites from far AND near, including "our own" community stars; while introducing some new faces looking to OHA's future. SUN AUG 16: OHA films, "Tire Tracks"

PREMIUM RESERVED SEATING \$25  
GENERAL ADMISSION \$20 / 18 / 15 / ISLAND STUDENTS FREE



THE STONINGTON OPERA HOUSE. TICKETS: WWW.OPERAHOUSEARTS.ORG / INFO & RESERVATIONS: 207.367.2788



The Stonington  
Opera House:  
Year-round Theater,

Music, Film,  
Vaudeville  
& more!



10th SUMMER SEASON

INCITE ART, CREATE COMMUNITY

www.operahousearts.org

207.367.2788

JUNE 18, 7PM

**SOLO PERFORMANCE**

**Yo Miss!**  
Teaching Inside the Cultural Divide  
**Judith Sloan**



A show based on the actor's work with students in the world's most diverse city: Queens, NY. Using music, poetry, and vivid character portrayals, Sloan breaks down assumptions that often divide those from seemingly conflicting worlds. **TICKETS: \$10 / ISLAND STUDENTS FREE**

JUNE 20, 7PM

**LUPINE FESTIVAL VARIETY SHOW & BUD CARTER MEMORIAL CONCERT**  
The Best of Island Talent

from the past year, including the Bud Carter Memorial Music Scholarship students; live music; interviews; comedy; more! All proceeds benefit the Bud Carter Music Scholarship fund.

JUNE 24-25; 29-30

**COMMUNITY READS**

**A Midsummer Night's Dream**

As part of OHA's Shakespeare in Stonington program, read the complete play over two nights, facilitated by cultural journalist ALICIA ANSTEAD. At the Stonington, Deer Isle, and Blue Hill Public Libraries. **FREE**

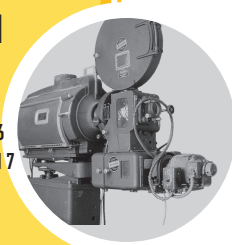
**MOVIE WEEKENDS**

IF NO LIVE SHOW IS LISTED, THEN THERE IS A 35MM, FIRST RUN-MOVIE! 7 P.M.

**CHECK LOCAL LISTINGS**

TICKETS \$6  
\$5 UNDER 17

FOR TITLES. JUNE 5-7, 12-14, 19-21, 26-28; JULY 18-19; JULY 31-AUGUST 2, 21-23, 28-30



JULY 2-12

**SHAKESPEARE IN STONINGTON**

*A Midsummer Night's*  
**DREAM**

**& 10TH ANNUAL BENEFIT GALA**

directed by Julia Whitworth, produced in cooperation w/Actors Equity. When Theseus brings home his war-booty bride, Hippolyta, this Queen of the Amazons reconciles her plight in a midsummer dream filled with confused lovers, mysterious faeries, and blue collar thespians.



With a live, original score by Sarah Pickett.

TICKETS: JULY 11 10th ANNIVERSARY GALA AT 5 P.M. \$30  
JULY 2, 3, 5, 9, 10 AT 7 P.M.; JULY 12 AT 2 P.M.  
PREMIUM RESERVED SEATING \$30  
GENERAL ADMISSION \$25 / 20 / 15 / ISLAND STUDENTS FREE

**ISLAND ARTS CAMP**

AT THE REACH PERFORMING ARTS CENTER

JULY 6-10

Sing, dance, sculpt, paint, make movies!

Co-sponsored with the Reach and Seamark Community Arts. 8:30 a.m.-3:30 p.m. Pre-registration required: forms available at [www.operahousearts.org](http://www.operahousearts.org).

**LIVE! FOR \$5**

ISLAND FAMILY THEATER ARTS PROGRAM

JULY 8 7PM

**BIFFING MUSSELS**

A short comedic play by Maine playwright Mike Gorman. Starring Melody Bates, Dave Bennett, & special guests.



TICKETS: \$5 AT THE DOOR

**LIVE! FOR \$5**

ISLAND FAMILY THEATER ARTS PROGRAM

7PM JULY 15

**OLD GRAY GOOSE**

Performing old-time tunes collected from Stevie Grey, Archie Hutchinson, and other island musicians; and more attributed to Blind George Eaton, Bonney Quinn, and Charlie Nevells.



**FILM SPECIAL**

7PM JULY 16

**Life by Lobster** a new documentary by Iain McCray Martin, a 2005 Deer Isle-Stonington High School and 2009 Emory University graduate, chronicling the choices, challenges, and lives of the island's young fishermen. **TICKETS: \$6/5 AT THE DOOR**

**ONE NIGHT ONLY**

**On Becoming**

Broadway and TV star CATHERINE WOLF presents her new solo show prior to its New York opening at the Cherry Lane Theatre. A voyage, through songs and stories, of growing up a member of the famous and talented family behind Bay Chamber Concerts.



JULY 17 8PM

PREMIUM RESERVED SEATING \$25  
GENERAL ADMISSION \$20 / 18 / 15 / ISLAND STUDENTS FREE

7PM JULY 22

**ADELE MYERS & DANCERS**

Contemporary dance, with humorous and sometimes unsettling choreography, exploring the dynamics of human interaction.



TICKETS: \$5 AT THE DOOR

9TH ANNUAL

7PM JULY 24-25

**DEER ISLE JAZZ FESTIVAL**

**DANZA QUARTET**

New Orleans "deep cuts" with pianist Tom McDermott and clarinetist Evan Christopher. GSA alums Ross Gallagher, Duncan Hardy open. (FRIDAY)



**ROY CAMPBELL TRIO**

The extraordinary trumpeter, with a special return appearance by bassist William Parker. GSA's award-winning combo, MUSAIC, opens. (SATURDAY)



PREMIUM RESERVED SEATING \$30  
GENERAL ADMISSION \$25 / 20 / 15 / ISLAND STUDENTS FREE

**LIVE! FOR \$5**

ISLAND FAMILY THEATER ARTS PROGRAM

7PM JULY 29



**THE MASK MESSENGER RETURNS**

BEVERLY MANN in a NEW show, mixing physical comedy, drama, and hand-crafted masks to demonstrate the power of theatrical transformation.

TICKETS: \$5 AT THE DOOR